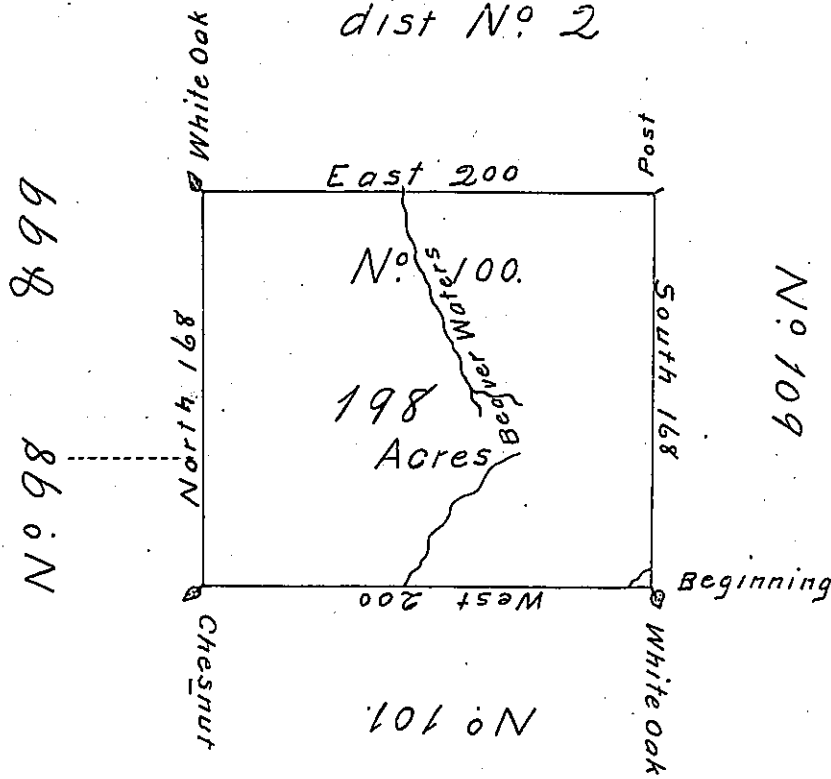


✓

Craig Ritchie's part of
dist N^o 2



The Above is a Draught of a Survey made
in the Month July 1785 In pursuance of
Instructions from the Surveyor General
Dated the 22^d day of January 1785 Situate
on the Waters of Beaver Creek in District
No 2 on the North Side of the Ohio River
Containing one hundred and Ninety Eight
Acres with Allowance of 6 P Cent

David Lett D.S.

John Lukens Esq^r Surv^r Gen^r

IN TESTIMONY that the above is a copy of the original remaining on file in
the Department of Internal Affairs of Pennsylvania, made
conformably to an Act of Assembly approved the 16th day of
February, 1833, I have hereunto set my Hand and caused
the Seal of said Department to be affixed at Harrisburg,
this fourth day of January 1904.

James B. Brown
Secretary of Internal Affairs.